

67°W

66°W

65°W

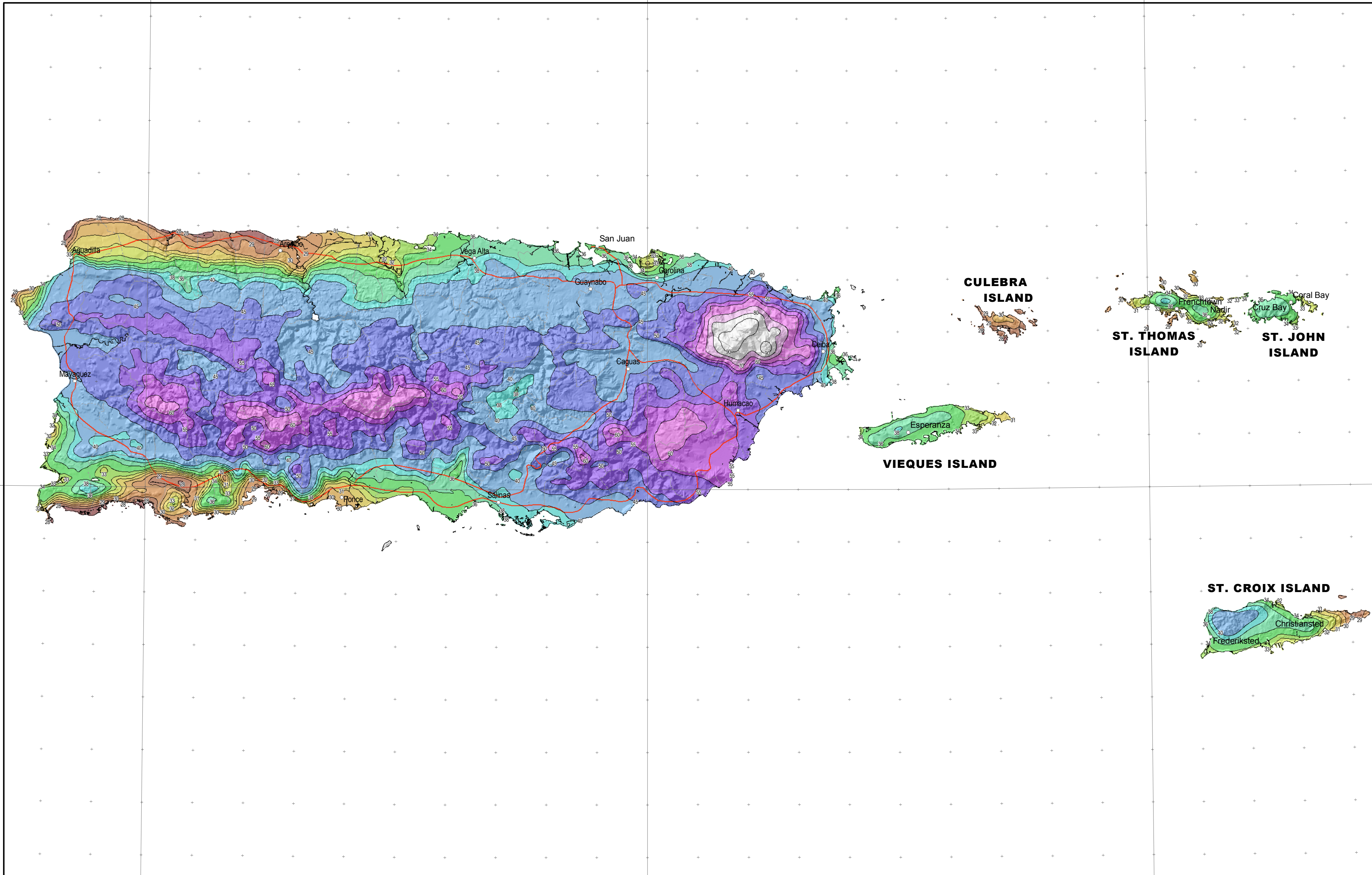
18°N

18°N

67°W

66°W

65°W

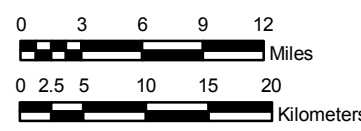


**NOAA Atlas 14, Volume 3, Version 4**  
**Puerto Rico and U.S. Virgin Islands**



Prepared by U.S. DEPARTMENT OF COMMERCE  
 NATIONAL OCEANIC AND ATMOSPHERIC ADMINISTRATION  
 NATIONAL WEATHER SERVICE  
 OFFICE OF HYDROLOGIC DEVELOPMENT  
 HYDROMETEOROLOGICAL DESIGN STUDIES CENTER  
 March 2008

SCALE 1:600,000 (when printed/viewed at ANSI C size)



**PUERTO RICO AND U.S. VIRGIN ISLANDS**

**Isopluvials of 60 day precipitation (inches)**  
**with Average Recurrence Interval of 100 years**

See NOAA Atlas 14 documentation for factors to convert to Annual  
 Exceedance Probabilities for all estimates below 25 years



Inches				
25.01 - 28.00	31.01 - 32.00	36.01 - 38.00	50.01 - 55.00	80.01 - 90.00
28.01 - 29.00	32.01 - 33.00	38.01 - 40.00	55.01 - 60.00	
29.01 - 30.00	33.01 - 34.00	40.01 - 45.00	60.01 - 70.00	
30.01 - 31.00	34.01 - 36.00	45.01 - 50.00	70.01 - 80.00	

Projection: Lambert Conformal Conic; Datum NAD83; Standard Parallels: 38° and 45°; Central Meridian 66°