

67°W

66°W

65°W

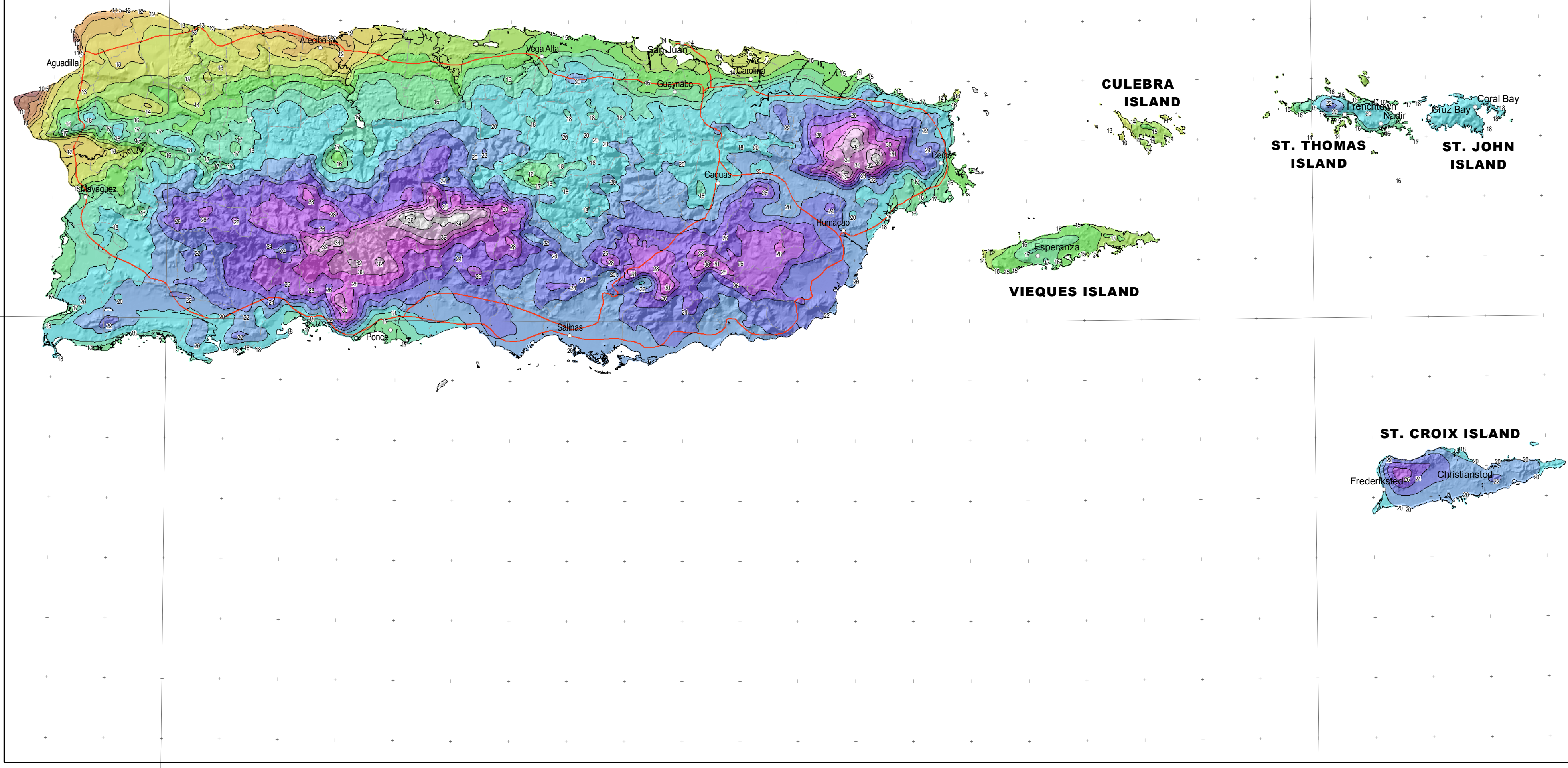
18°N

18°N

67°W

66°W

65°W

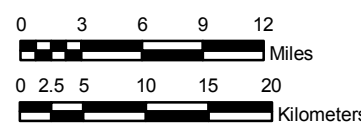


NOAA Atlas 14, Volume 3, Version 4
Puerto Rico and U.S. Virgin Islands



Prepared by U.S. DEPARTMENT OF COMMERCE
 NATIONAL OCEANIC AND ATMOSPHERIC ADMINISTRATION
 NATIONAL WEATHER SERVICE
 OFFICE OF HYDROLOGIC DEVELOPMENT
 HYDROMETEOROLOGICAL DESIGN STUDIES CENTER
 March 2008

SCALE 1:600,000 (when printed/viewed at ANSI C size)



PUERTO RICO AND U.S. VIRGIN ISLANDS

Isopluvials of 48 hour precipitation (inches)
with Average Recurrence Interval of 100 years

See NOAA Atlas 14 documentation for factors to convert to Annual Exceedance Probabilities for all estimates below 25 years



Inches				
8.51 - 10.00	11.51 - 12.00	15.01 - 16.00	20.01 - 22.00	28.01 - 30.00
10.01 - 10.50	12.01 - 13.00	16.01 - 17.00	22.01 - 24.00	30.01 - 32.00
10.51 - 11.00	13.01 - 14.00	17.01 - 18.00	24.01 - 26.00	32.01 - 34.00
11.01 - 11.50	14.01 - 15.00	18.01 - 20.00	26.01 - 28.00	34.01 - 36.00

Projection: Lambert Conformal Conic; Datum NAD83; Standard Parallels: 38° and 45°; Central Meridian 66°