

**West Central Tennessee, 20-22 August 2021
Annual Exceedance Probabilities (AEPs) for the Highest 12-hour Rainfall Period**

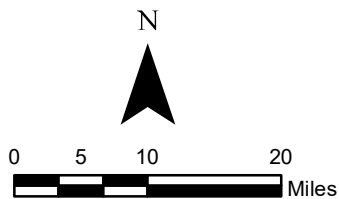
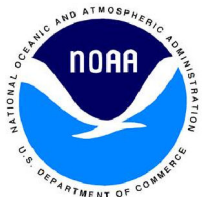
**National Water Center
Office of Water Prediction, National Weather Service
National Oceanic and Atmospheric Administration**

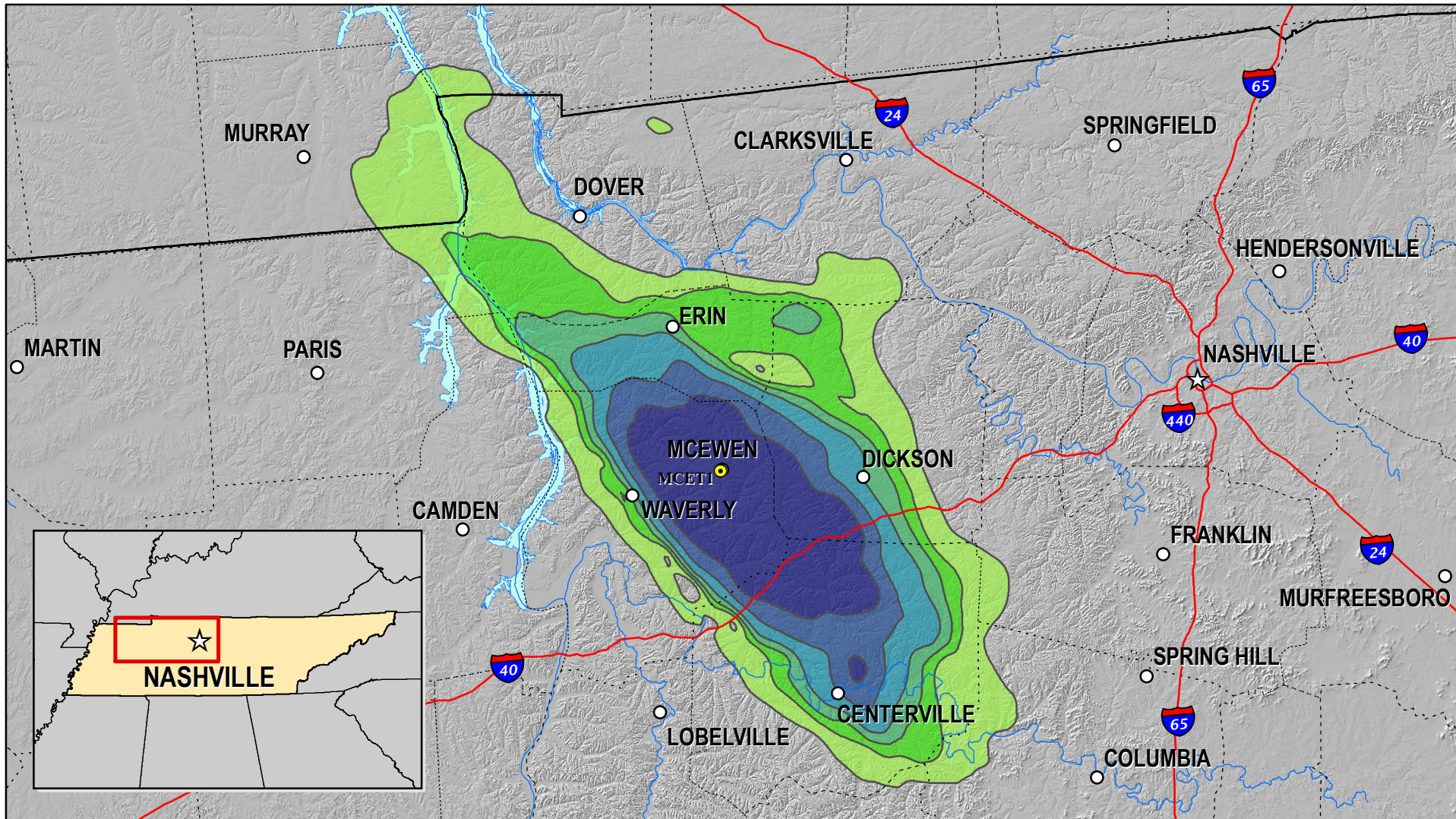
<https://www.weather.gov/owp/hdsc>

Created 23 August 2021

Precipitation frequency estimates are from NOAA Atlas 14.
Rainfall values come from 1-hour Stage IV multi-sensor data.

- > 1/10
- 1/50 - 1/10
- 1/100 - 1/50
- 1/200 - 1/100
- 1/500 - 1/200
- 1/1000 - 1/500
- < 1/1000





**West Central Tennessee, 20-22 August 2021
Annual Exceedance Probabilities (AEPs) for the Highest 24-hour Rainfall Period**

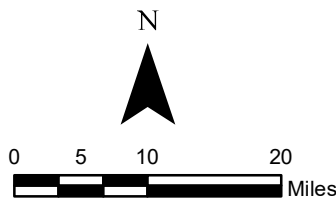
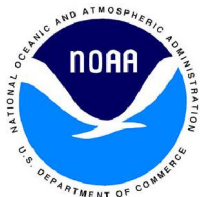
**National Water Center
Office of Water Prediction, National Weather Service
National Oceanic and Atmospheric Administration**

<https://www.weather.gov/owp/hdsc>

Created 23 August 2021

Precipitation frequency estimates are from NOAA Atlas 14.
Rainfall values come from 1-hour Stage IV multi-sensor data.

- > 1/10
- 1/50 - 1/10
- 1/100 - 1/50
- 1/200 - 1/100
- 1/500 - 1/200
- 1/1000 - 1/500
- < 1/1000





MCEWEN ID: MCET1 Latitude: 36.1069 Longitude: -87.6369

