

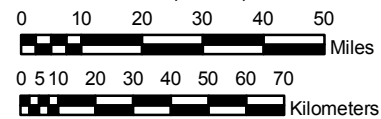
**DELAWARE, DISTRICT OF COLUMBIA, MARYLAND,
VIRGINIA, WEST VIRGINIA**

**NOAA Atlas 14, Volume 2, Version 3
Ohio River Basin and Surrounding States**



Prepared by U.S. DEPARTMENT OF COMMERCE
NATIONAL OCEANIC AND ATMOSPHERIC ADMINISTRATION
NATIONAL WEATHER SERVICE
OFFICE OF HYDROLOGIC DEVELOPMENT
HYDROMETEOROLOGICAL DESIGN STUDIES CENTER
August 2006

SCALE 1:2,000,000 (when printed/viewed at ANSI C size)



**Isopluvials of 48 hour precipitation (inches)
with Average Recurrence Interval of 100 years**

See NOAA Atlas 14 documentation for factors to convert to Annual
Exceedance Probabilities for all estimates below 25 years

Inches



4.93 - 5.00	5.61 - 5.80	7.01 - 7.50	9.01 - 10.00	13.01 - 14.00
5.01 - 5.20	5.81 - 6.00	7.51 - 8.00	10.01 - 11.00	14.01 - 15.00
5.21 - 5.40	6.01 - 6.50	8.01 - 8.50	11.01 - 12.00	15.01 - 16.00
5.41 - 5.60	6.51 - 7.00	8.51 - 9.00	12.01 - 13.00	16.01 - 17.00

Projection: Lambert Conformal Conic; Datum NAD83; Standard Parallels: 38° and 45°; Central Meridian 83°