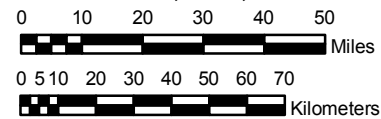


NOAA Atlas 14, Volume 2, Version 3
Ohio River Basin and Surrounding States



Prepared by U.S. DEPARTMENT OF COMMERCE
 NATIONAL OCEANIC AND ATMOSPHERIC ADMINISTRATION
 NATIONAL WEATHER SERVICE
 OFFICE OF HYDROLOGIC DEVELOPMENT
 HYDROMETEOROLOGICAL DESIGN STUDIES CENTER
 August 2006

SCALE 1:2,000,000 (when printed/viewed at ANSI C size)



NORTH CAROLINA, SOUTH CAROLINA

Isopluals of 60 minute precipitation (inches)
with Average Recurrence Interval of 100 years

See NOAA Atlas 14 documentation for factors to convert to Annual
 Exceedance Probabilities for all estimates below 25 years



Inches

1.98 - 2.00	2.51 - 2.60	3.11 - 3.20	3.71 - 3.80	4.31 - 4.40
2.01 - 2.10	2.61 - 2.70	3.21 - 3.30	3.81 - 3.90	4.41 - 4.50
2.11 - 2.20	2.71 - 2.80	3.31 - 3.40	3.91 - 4.00	4.51 - 4.60
2.21 - 2.30	2.81 - 2.90	3.41 - 3.50	4.01 - 4.10	4.61 - 4.70
2.31 - 2.40	2.91 - 3.00	3.51 - 3.60	4.11 - 4.20	
2.41 - 2.50	3.01 - 3.10	3.61 - 3.70	4.21 - 4.30	

Projection: Lambert Conformal Conic; Datum NAD83; Standard Parallels: 38° and 45°; Central Meridian 83°