

NOAA Atlas 14, Volume 10, Version 3  
Northeastern States

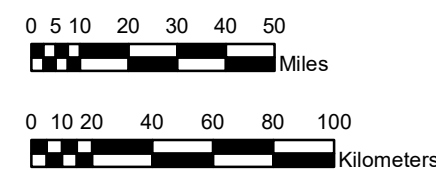
# CONNECTICUT, MAINE, MASSACHUSETTS, NEW HAMPSHIRE, NEW YORK, RHODE ISLAND, VERMONT

Isopluvials of 2-year 6-hour precipitation in inches

SCALE 1:2,500,000



Prepared by U.S. DEPARTMENT OF COMMERCE  
NATIONAL OCEANIC AND ATMOSPHERIC ADMINISTRATION  
NATIONAL WEATHER SERVICE  
OFFICE OF WATER PREDICTION  
HYDROMETEOROLOGICAL DESIGN STUDIES CENTER  
April 2019



1.44 - 1.50	1.71 - 1.80	2.01 - 2.10	2.31 - 2.40	2.61 - 2.70
1.51 - 1.60	1.81 - 1.90	2.11 - 2.20	2.41 - 2.50	2.71 - 2.80
1.61 - 1.70	1.91 - 2.00	2.21 - 2.30	2.51 - 2.60	2.81 - 2.86

Projection: Lambert Conformal Conic; Datum NAD83; Standard Parallels: 43°N and 45°N; Central Meridian 72.5°W.