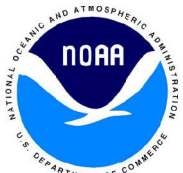


NOAA Atlas 14, Volume 10, Version 3  
 Northeastern States

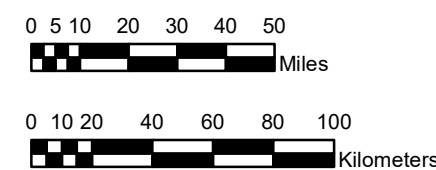
# CONNECTICUT, MAINE, MASSACHUSETTS, NEW HAMPSHIRE, NEW YORK, RHODE ISLAND, VERMONT

Isopluvials of 2-year 48-hour precipitation in inches

SCALE 1:2,500,000



Prepared by U.S. DEPARTMENT OF COMMERCE  
 NATIONAL OCEANIC AND ATMOSPHERIC ADMINISTRATION  
 NATIONAL WEATHER SERVICE  
 OFFICE OF WATER PREDICTION  
 HYDROMETEOROLOGICAL DESIGN STUDIES CENTER  
 April 2019



2.38 - 2.50	3.01 - 3.25	3.76 - 4.00	4.51 - 4.75	5.26 - 5.50
2.51 - 2.75	3.26 - 3.50	4.01 - 4.25	4.76 - 5.00	5.51 - 5.75
2.76 - 3.00	3.51 - 3.75	4.26 - 4.50	5.01 - 5.25	5.76 - 5.88

Projection: Lambert Conformal Conic; Datum NAD83; Standard Parallels: 43°N and 45°N; Central Meridian 72.5°W.