

NOAA Atlas 14, Volume 10, Version 3
Northeastern States

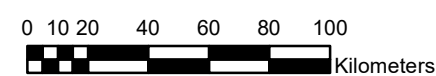
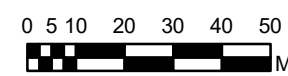
CONNECTICUT, MAINE, MASSACHUSETTS, NEW HAMPSHIRE, NEW YORK, RHODE ISLAND, VERMONT

Isopluvials of 25-year 24-hour precipitation in inches

SCALE 1:2,500,000



Prepared by U.S. DEPARTMENT OF COMMERCE
NATIONAL OCEANIC AND ATMOSPHERIC ADMINISTRATION
NATIONAL WEATHER SERVICE
OFFICE OF WATER PREDICTION
HYDROMETEOROLOGICAL DESIGN STUDIES CENTER
April 2019



3.61 - 4.00	5.01 - 5.50	6.51 - 7.00	8.01 - 8.50	9.51 - 9.66
4.01 - 4.50	5.51 - 6.00	7.01 - 7.50	8.51 - 9.00	
4.51 - 5.00	6.01 - 6.50	7.51 - 8.00	9.01 - 9.50	

Projection: Lambert Conformal Conic; Datum NAD83; Standard Parallels: 43°N and 45°N; Central Meridian 72.5°W.