

NOAA Atlas 14, Volume 10, Version 2  
 Northeastern States

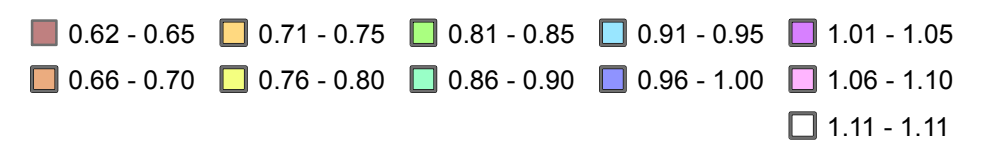
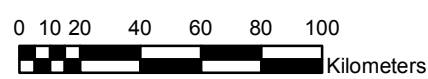
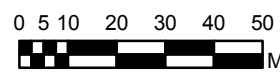
**CONNECTICUT, MAINE, MASSACHUSETTS,  
 NEW HAMPSHIRE, NEW YORK, RHODE ISLAND, VERMONT**

Isopluals of 1-year 60-minute precipitation in inches

SCALE 1:2,500,000



Prepared by U.S. DEPARTMENT OF COMMERCE  
 NATIONAL OCEANIC AND ATMOSPHERIC ADMINISTRATION  
 NATIONAL WEATHER SERVICE  
 NATIONAL WATER CENTER  
 HYDROMETEOROLOGICAL DESIGN STUDIES CENTER  
 September 2015



Projection: Lambert Conformal Conic; Datum NAD83; Standard Parallels: 43°N and 45°N; Central Meridian 72.5°W.