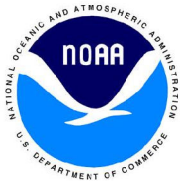


NOAA Atlas 14, Volume 10, Version 2
 Northeastern States

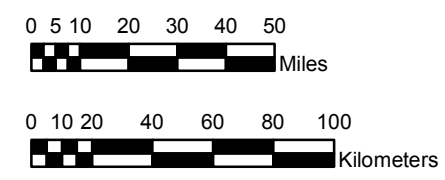
CONNECTICUT, MAINE, MASSACHUSETTS, NEW HAMPSHIRE, NEW YORK, RHODE ISLAND, VERMONT

Isopluvials of 1-year 24-hour precipitation in inches

SCALE 1:2,500,000



Prepared by U.S. DEPARTMENT OF COMMERCE
 NATIONAL OCEANIC AND ATMOSPHERIC ADMINISTRATION
 NATIONAL WEATHER SERVICE
 NATIONAL WATER CENTER
 HYDROMETEOROLOGICAL DESIGN STUDIES CENTER
 September 2015



- 1.73 - 1.75
- 2.01 - 2.25
- 2.51 - 2.75
- 3.01 - 3.25
- 3.51 - 3.75
- 1.76 - 2.00
- 2.26 - 2.50
- 2.76 - 3.00
- 3.26 - 3.50
- 3.76 - 4.00

Projection: Lambert Conformal Conic; Datum NAD83; Standard Parallels: 43°N and 45°N; Central Meridian 72.5°W.