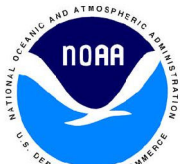


NOAA Atlas 14, Volume 10, Version 3
 Northeastern States

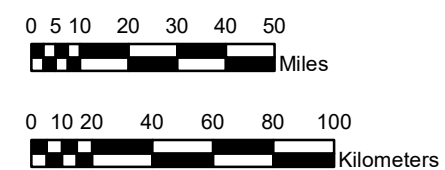
CONNECTICUT, MAINE, MASSACHUSETTS, NEW HAMPSHIRE, NEW YORK, RHODE ISLAND, VERMONT

Isopluvials of 100-year 6-hour precipitation in inches

SCALE 1:2,500,000



Prepared by U.S. DEPARTMENT OF COMMERCE
 NATIONAL OCEANIC AND ATMOSPHERIC ADMINISTRATION
 NATIONAL WEATHER SERVICE
 OFFICE OF WATER PREDICTION
 HYDROMETEOROLOGICAL DESIGN STUDIES CENTER
 April 2019



3.09 - 3.25	4.01 - 4.25	5.01 - 5.25	6.01 - 6.25	7.01 - 7.06
3.26 - 3.50	4.26 - 4.50	5.26 - 5.50	6.26 - 6.50	
3.51 - 3.75	4.51 - 4.75	5.51 - 5.75	6.51 - 6.75	
3.76 - 4.00	4.76 - 5.00	5.76 - 6.00	6.76 - 7.00	

Projection: Lambert Conformal Conic; Datum NAD83; Standard Parallels: 43°N and 45°N; Central Meridian 72.5°W.