

NOAA Atlas 14, Volume 10, Version 3
 Northeastern States

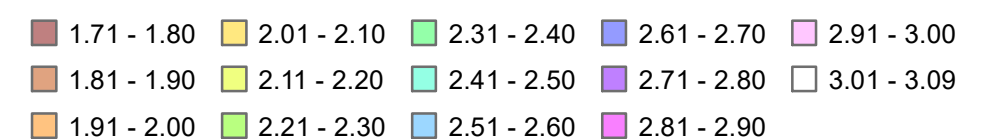
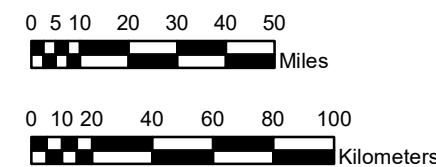
CONNECTICUT, MAINE, MASSACHUSETTS, NEW HAMPSHIRE, NEW YORK, RHODE ISLAND, VERMONT

Isopluvials of 100-year 60-minute precipitation in inches

SCALE 1:2,500,000



Prepared by U.S. DEPARTMENT OF COMMERCE
 NATIONAL OCEANIC AND ATMOSPHERIC ADMINISTRATION
 NATIONAL WEATHER SERVICE
 OFFICE OF WATER PREDICTION
 HYDROMETEOROLOGICAL DESIGN STUDIES CENTER
 April 2019



Projection: Lambert Conformal Conic; Datum NAD83; Standard Parallels: 43°N and 45°N; Central Meridian 72.5°W.