

NOAA Atlas 14, Volume 10, Version 3  
 Northeastern States

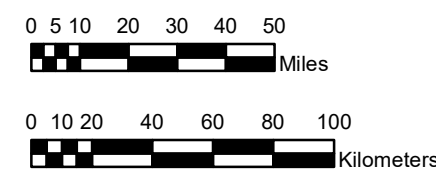
# CONNECTICUT, MAINE, MASSACHUSETTS, NEW HAMPSHIRE, NEW YORK, RHODE ISLAND, VERMONT

Isopluvials of 100-year 60-day precipitation in inches

SCALE 1:2,500,000



Prepared by U.S. DEPARTMENT OF COMMERCE  
 NATIONAL OCEANIC AND ATMOSPHERIC ADMINISTRATION  
 NATIONAL WEATHER SERVICE  
 OFFICE OF WATER PREDICTION  
 HYDROMETEOROLOGICAL DESIGN STUDIES CENTER  
 April 2019



14.19 - 16.00	20.01 - 22.00	26.01 - 28.00	32.01 - 34.00	38.01 - 40.00
16.01 - 18.00	22.01 - 24.00	28.01 - 30.00	34.01 - 36.00	40.01 - 41.45
18.01 - 20.00	24.01 - 26.00	30.01 - 32.00	36.01 - 38.00	

Projection: Lambert Conformal Conic; Datum NAD83; Standard Parallels: 43°N and 45°N; Central Meridian 72.5°W.