

NOAA Atlas 14, Volume 10, Version 3
Northeastern States

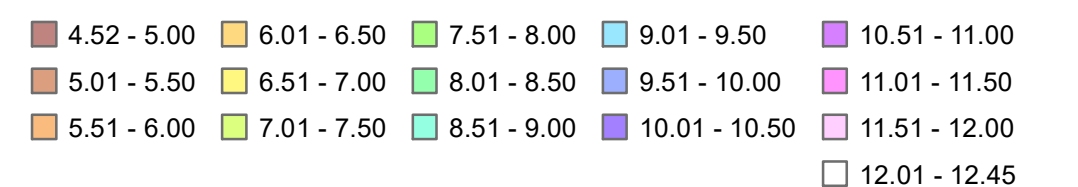
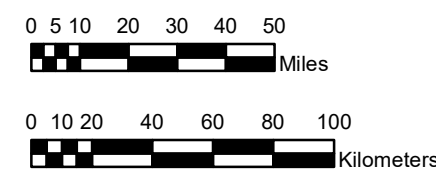
CONNECTICUT, MAINE, MASSACHUSETTS, NEW HAMPSHIRE, NEW YORK, RHODE ISLAND, VERMONT

Isopluals of 100-year 24-hour precipitation in inches

SCALE 1:2,500,000



Prepared by U.S. DEPARTMENT OF COMMERCE
NATIONAL OCEANIC AND ATMOSPHERIC ADMINISTRATION
NATIONAL WEATHER SERVICE
OFFICE OF WATER PREDICTION
HYDROMETEOROLOGICAL DESIGN STUDIES CENTER
April 2019



Projection: Lambert Conformal Conic; Datum NAD83; Standard Parallels: 43°N and 45°N; Central Meridian 72.5°W.