

NOAA Atlas 14, Volume 10, Version 3
 Northeastern States

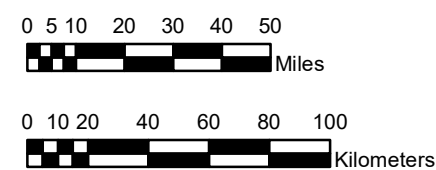
CONNECTICUT, MAINE, MASSACHUSETTS, NEW HAMPSHIRE, NEW YORK, RHODE ISLAND, VERMONT

Isopluvials of 100-year 10-day precipitation in inches

SCALE 1:2,500,000



Prepared by U.S. DEPARTMENT OF COMMERCE
 NATIONAL OCEANIC AND ATMOSPHERIC ADMINISTRATION
 NATIONAL WEATHER SERVICE
 OFFICE OF WATER PREDICTION
 HYDROMETEOROLOGICAL DESIGN STUDIES CENTER
 April 2019



6.63 - 7.00	9.01 - 10.00	12.01 - 13.00	15.01 - 16.00	18.01 - 19.00
7.01 - 8.00	10.01 - 11.00	13.01 - 14.00	16.01 - 17.00	19.01 - 20.00
8.01 - 9.00	11.01 - 12.00	14.01 - 15.00	17.01 - 18.00	20.01 - 20.71

Projection: Lambert Conformal Conic; Datum NAD83; Standard Parallels: 43°N and 45°N; Central Meridian 72.5°W.