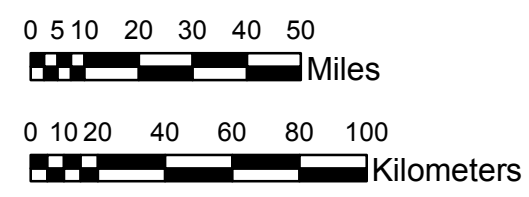


**NOAA Atlas 14, Volume 8, Version 2  
Midwestern States**



Prepared by U.S. DEPARTMENT OF COMMERCE  
NATIONAL OCEANIC AND ATMOSPHERIC ADMINISTRATION  
NATIONAL WEATHER SERVICE  
OFFICE OF HYDROLOGIC DEVELOPMENT  
HYDROMETEOROLOGICAL DESIGN STUDIES CENTER  
April 2013



**MICHIGAN, WISCONSIN**  
**Isopluvials of 5-year 6-hour precipitation in inches**  
**SCALE 1:2,250,000**

Projection: Lambert Conformal Conic; Datum NAD83; Standard Parallels: 42° N and 45° N; Central Meridian 87° W.

0.72 - 0.75	1.51 - 1.75	2.51 - 2.75	3.51 - 3.75
0.76 - 1.00	1.76 - 2.00	2.76 - 3.00	3.76 - 4.00
1.01 - 1.25	2.01 - 2.25	3.01 - 3.25	4.01 - 4.25
1.26 - 1.50	2.26 - 2.50	3.26 - 3.50	4.26 - 4.36

*Legend based on entire Volume 8 project area.*