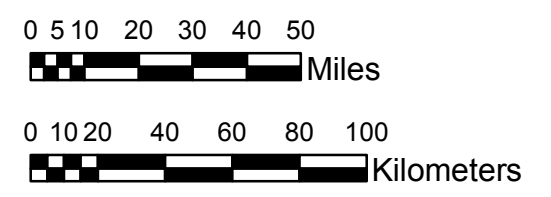


NOAA Atlas 14, Volume 8, Version 2
Midwestern States

MICHIGAN, WISCONSIN
Isopluvials of 50-year 6-hour precipitation in inches
SCALE 1:2,250,000



Prepared by U.S. DEPARTMENT OF COMMERCE
NATIONAL OCEANIC AND ATMOSPHERIC ADMINISTRATION
NATIONAL WEATHER SERVICE
OFFICE OF HYDROLOGIC DEVELOPMENT
HYDROMETEOROLOGICAL DESIGN STUDIES CENTER
April 2013



1.15 - 1.50	2.51 - 3.00	4.01 - 4.50	5.51 - 6.00
1.51 - 2.00	3.01 - 3.50	4.51 - 5.00	6.01 - 6.50
2.01 - 2.50	3.51 - 4.00	5.01 - 5.50	6.51 - 6.88

Projection: Lambert Conformal Conic; Datum NAD83; Standard Parallels: 42°N and 45°N; Central Meridian 87°W.

Legend based on entire Volume 8 project area.