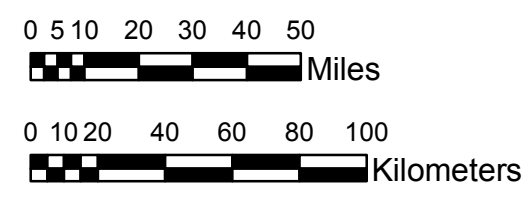


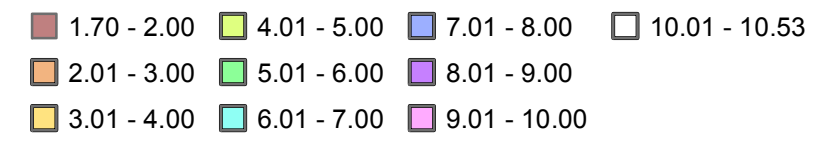
**NOAA Atlas 14, Volume 8, Version 2**  
**Midwestern States**



Prepared by U.S. DEPARTMENT OF COMMERCE  
 NATIONAL OCEANIC AND ATMOSPHERIC ADMINISTRATION  
 NATIONAL WEATHER SERVICE  
 OFFICE OF HYDROLOGIC DEVELOPMENT  
 HYDROMETEOROLOGICAL DESIGN STUDIES CENTER  
 April 2013



**MICHIGAN, WISCONSIN**  
 Isopluals of 50-year 24-hour precipitation in inches  
 SCALE 1:2,250,000



Projection: Lambert Conformal Conic; Datum NAD83; Standard Parallels: 42°N and 45°N; Central Meridian 87°W.

Legend based on entire Volume 8 project area.