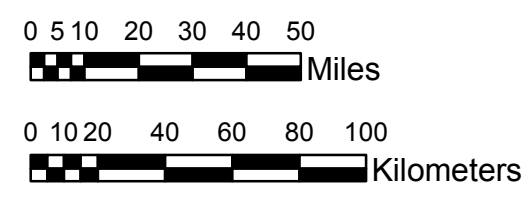


NOAA Atlas 14, Volume 8, Version 2
Midwestern States



Prepared by U.S. DEPARTMENT OF COMMERCE
 NATIONAL OCEANIC AND ATMOSPHERIC ADMINISTRATION
 NATIONAL WEATHER SERVICE
 OFFICE OF HYDROLOGIC DEVELOPMENT
 HYDROMETEOROLOGICAL DESIGN STUDIES CENTER
 April 2013



MICHIGAN, WISCONSIN
Isopluvials of 2-year 60-day precipitation in inches
SCALE 1:2,250,000

Projection: Lambert Conformal Conic; Datum NAD83; Standard Parallels: 42°N and 45°N; Central Meridian 87°W.

