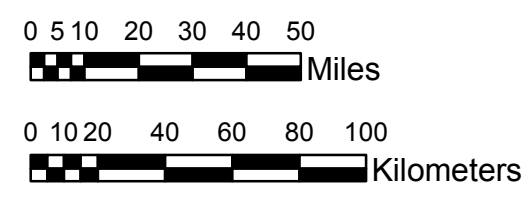


NOAA Atlas 14, Volume 8, Version 2
Midwestern States



Prepared by U.S. DEPARTMENT OF COMMERCE
 NATIONAL OCEANIC AND ATMOSPHERIC ADMINISTRATION
 NATIONAL WEATHER SERVICE
 OFFICE OF HYDROLOGIC DEVELOPMENT
 HYDROMETEOROLOGICAL DESIGN STUDIES CENTER
 April 2013



MICHIGAN, WISCONSIN
Isopluvials of 2-year 30-day precipitation in inches
SCALE 1:2,250,000

2.22 - 3.00	5.01 - 6.00	8.01 - 9.00	11.01 - 12.00
3.01 - 4.00	6.01 - 7.00	9.01 - 10.00	12.01 - 13.00
4.01 - 5.00	7.01 - 8.00	10.01 - 11.00	13.01 - 13.72

Projection: Lambert Conformal Conic; Datum NAD83; Standard Parallels: 42°N and 45°N; Central Meridian 87°W.

Legend based on entire Volume 8 project area.