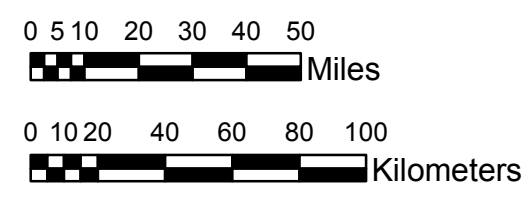


**NOAA Atlas 14, Volume 8, Version 2
Midwestern States**



Prepared by U.S. DEPARTMENT OF COMMERCE
NATIONAL OCEANIC AND ATMOSPHERIC ADMINISTRATION
NATIONAL WEATHER SERVICE
OFFICE OF HYDROLOGIC DEVELOPMENT
HYDROMETEOROLOGICAL DESIGN STUDIES CENTER
April 2013



**MICHIGAN, WISCONSIN
Isopluvials of 2-year 10-day precipitation in inches
SCALE 1:2,250,000**

1.50 - 2.00	3.51 - 4.00	5.51 - 6.00	7.51 - 8.00
2.01 - 2.50	4.01 - 4.50	6.01 - 6.50	8.01 - 8.52
2.51 - 3.00	4.51 - 5.00	6.51 - 7.00	
3.01 - 3.50	5.01 - 5.50	7.01 - 7.50	

Projection: Lambert Conformal Conic; Datum NAD83; Standard Parallels: 42°N and 45°N; Central Meridian 87°W.

Legend based on entire Volume 8 project area.