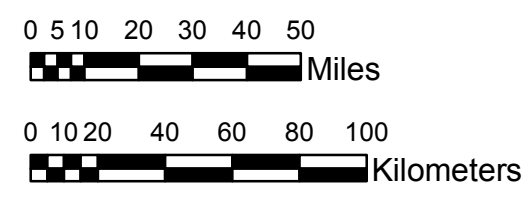


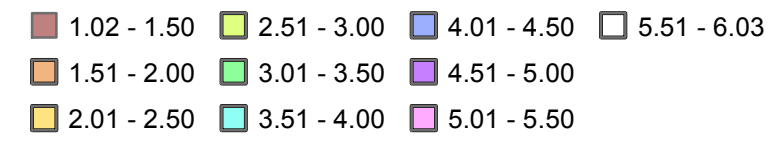
**NOAA Atlas 14, Volume 8, Version 2
Midwestern States**



Prepared by U.S. DEPARTMENT OF COMMERCE
NATIONAL OCEANIC AND ATMOSPHERIC ADMINISTRATION
NATIONAL WEATHER SERVICE
OFFICE OF HYDROLOGIC DEVELOPMENT
HYDROMETEOROLOGICAL DESIGN STUDIES CENTER
April 2013



MICHIGAN, WISCONSIN
Isopluvials of 25-year 6-hour precipitation in inches
SCALE 1:2,250,000



Projection: Lambert Conformal Conic; Datum NAD83; Standard Parallels: 42° N and 45° N; Central Meridian 87° W.

Legend based on entire Volume 8 project area.