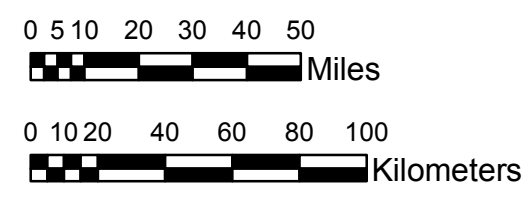


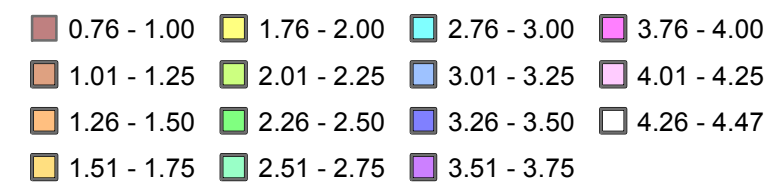
NOAA Atlas 14, Volume 8, Version 2
Midwestern States



Prepared by U.S. DEPARTMENT OF COMMERCE
 NATIONAL OCEANIC AND ATMOSPHERIC ADMINISTRATION
 NATIONAL WEATHER SERVICE
 OFFICE OF HYDROLOGIC DEVELOPMENT
 HYDROMETEOROLOGICAL DESIGN STUDIES CENTER
 April 2013



MICHIGAN, WISCONSIN
Isopluvials of 1-year 24-hour precipitation in inches
 SCALE 1:2,250,000



Projection: Lambert Conformal Conic; Datum NAD83; Standard Parallels: 42° N and 45° N; Central Meridian 87° W.

Legend based on entire Volume 8 project area.