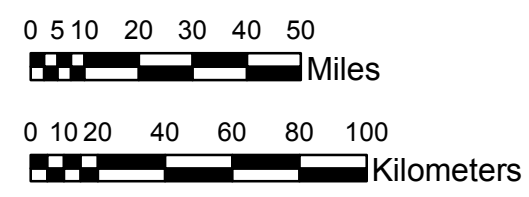


**NOAA Atlas 14, Volume 8, Version 2**  
**Midwestern States**



Prepared by U.S. DEPARTMENT OF COMMERCE  
 NATIONAL OCEANIC AND ATMOSPHERIC ADMINISTRATION  
 NATIONAL WEATHER SERVICE  
 OFFICE OF HYDROLOGIC DEVELOPMENT  
 HYDROMETEOROLOGICAL DESIGN STUDIES CENTER  
 April 2013



**MICHIGAN, WISCONSIN**  
 Isopluals of 100-year 6-hour precipitation in inches  
 SCALE 1:2,250,000

1.29 - 1.50	3.01 - 3.50	5.01 - 5.50	7.01 - 7.50
1.51 - 2.00	3.51 - 4.00	5.51 - 6.00	7.51 - 7.94
2.01 - 2.50	4.01 - 4.50	6.01 - 6.50	
2.51 - 3.00	4.51 - 5.00	6.51 - 7.00	

Projection: Lambert Conformal Conic; Datum NAD83; Standard Parallels: 42°N and 45°N; Central Meridian 87°W.

Legend based on entire Volume 8 project area.