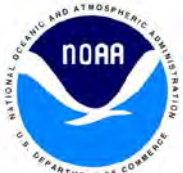
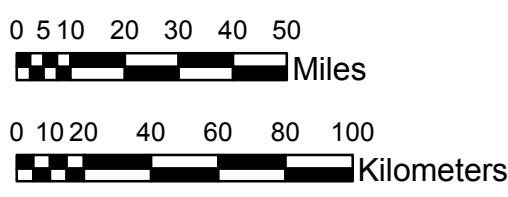


**NOAA Atlas 14, Volume 8, Version 2**  
**Midwestern States**



Prepared by U.S. DEPARTMENT OF COMMERCE  
 NATIONAL OCEANIC AND ATMOSPHERIC ADMINISTRATION  
 NATIONAL WEATHER SERVICE  
 OFFICE OF HYDROLOGIC DEVELOPMENT  
 HYDROMETEOROLOGICAL DESIGN STUDIES CENTER  
 April 2013



**MICHIGAN, WISCONSIN**  
**Isopluals of 100-year 60-minute precipitation in inches**  
**SCALE 1:2,250,000**

0.94 - 1.00	1.76 - 2.00	2.76 - 3.00	3.76 - 4.00
1.01 - 1.25	2.01 - 2.25	3.01 - 3.25	4.01 - 4.25
1.26 - 1.50	2.26 - 2.50	3.26 - 3.50	4.26 - 4.37
1.51 - 1.75	2.51 - 2.75	3.51 - 3.75	

Projection: Lambert Conformal Conic; Datum NAD83; Standard Parallels: 42°N and 45°N; Central Meridian 87°W.

Legend based on entire Volume 8 project area.