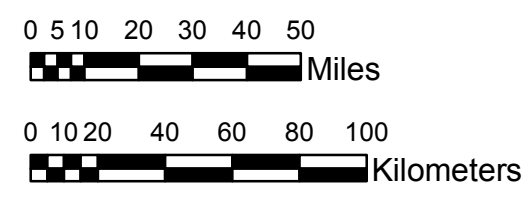


NOAA Atlas 14, Volume 8, Version 2  
Midwestern States



Prepared by U.S. DEPARTMENT OF COMMERCE  
NATIONAL OCEANIC AND ATMOSPHERIC ADMINISTRATION  
NATIONAL WEATHER SERVICE  
OFFICE OF HYDROLOGIC DEVELOPMENT  
HYDROMETEOROLOGICAL DESIGN STUDIES CENTER  
April 2013



# MICHIGAN, WISCONSIN

Isopluvials of 100-year 48-hour precipitation in inches  
SCALE 1:2,250,000

2.14 - 3.00	5.01 - 6.00	8.01 - 9.00	11.01 - 12.00
3.01 - 4.00	6.01 - 7.00	9.01 - 10.00	12.01 - 13.00
4.01 - 5.00	7.01 - 8.00	10.01 - 11.00	13.01 - 13.83

Legend based on entire Volume 8 project area.

Projection: Lambert Conformal Conic; Datum NAD83; Standard Parallels: 42°N and 45°N; Central Meridian 87°W.