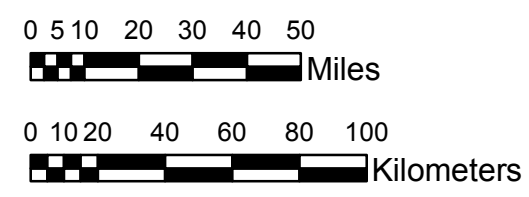


NOAA Atlas 14, Volume 8, Version 2
Midwestern States



Prepared by U.S. DEPARTMENT OF COMMERCE
NATIONAL OCEANIC AND ATMOSPHERIC ADMINISTRATION
NATIONAL WEATHER SERVICE
OFFICE OF HYDROLOGIC DEVELOPMENT
HYDROMETEOROLOGICAL DESIGN STUDIES CENTER
April 2013



MICHIGAN, WISCONSIN

Isopluvials of 100-year 24-hour precipitation in inches
SCALE 1:2,250,000

1.88 - 2.00	4.01 - 5.00	7.01 - 8.00	10.01 - 11.00
2.01 - 3.00	5.01 - 6.00	8.01 - 9.00	11.01 - 11.93
3.01 - 4.00	6.01 - 7.00	9.01 - 10.00	

Projection: Lambert Conformal Conic; Datum NAD83; Standard Parallels: 42° N and 45° N; Central Meridian 87° W.

Legend based on entire Volume 8 project area.