

**NOAA Atlas 14, Volume 8, Version 2
Midwestern States**

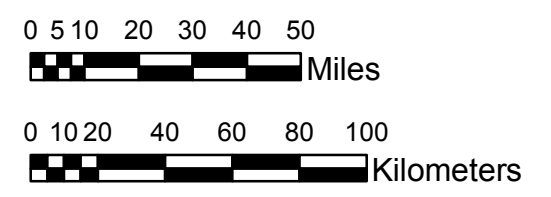
COLORADO

Isopluvials of 5-year 60-minute precipitation in inches

SCALE 1:2,250,000



Prepared by U.S. DEPARTMENT OF COMMERCE
NATIONAL OCEANIC AND ATMOSPHERIC ADMINISTRATION
NATIONAL WEATHER SERVICE
OFFICE OF HYDROLOGIC DEVELOPMENT
HYDROMETEOROLOGICAL DESIGN STUDIES CENTER
April 2013



0.47 - 0.60	1.01 - 1.20	1.61 - 1.80	2.21 - 2.40
0.61 - 0.80	1.21 - 1.40	1.81 - 2.00	2.41 - 2.45
0.81 - 1.00	1.41 - 1.60	2.01 - 2.20	

Projection: Lambert Conformal Conic; Datum NAD83; Standard Parallels: 38° N and 40° N; Central Meridian 105.5° W.

Legend based on entire Volume 8 project area.