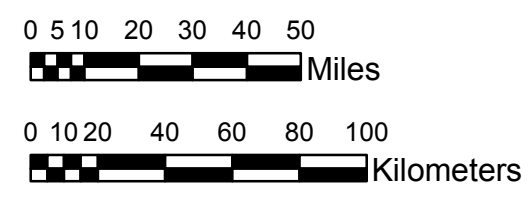


**NOAA Atlas 14, Volume 8, Version 2  
Midwestern States**



Prepared by U.S. DEPARTMENT OF COMMERCE  
NATIONAL OCEANIC AND ATMOSPHERIC ADMINISTRATION  
NATIONAL WEATHER SERVICE  
OFFICE OF HYDROLOGIC DEVELOPMENT  
HYDROMETEOROLOGICAL DESIGN STUDIES CENTER  
April 2013



**COLORADO**  
**Isopluvials of 2-year 6-hour precipitation in inches**  
**SCALE 1:2,250,000**

Projection: Lambert Conformal Conic; Datum NAD83; Standard Parallels: 38°N and 40°N; Central Meridian 105.5°W.

0.59 - 0.60	1.21 - 1.40	2.01 - 2.20	2.81 - 3.00
0.61 - 0.80	1.41 - 1.60	2.21 - 2.40	3.01 - 3.20
0.81 - 1.00	1.61 - 1.80	2.41 - 2.60	3.21 - 3.40
1.01 - 1.20	1.81 - 2.00	2.61 - 2.80	3.41 - 3.58

*Legend based on entire Volume 8 project area.*