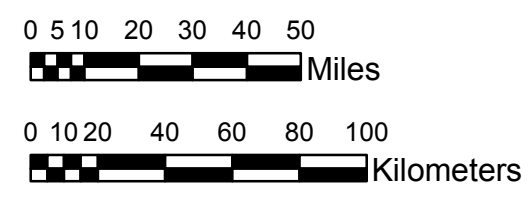


NOAA Atlas 14, Volume 8, Version 2
Midwestern States



Prepared by U.S. DEPARTMENT OF COMMERCE
 NATIONAL OCEANIC AND ATMOSPHERIC ADMINISTRATION
 NATIONAL WEATHER SERVICE
 OFFICE OF HYDROLOGIC DEVELOPMENT
 HYDROMETEOROLOGICAL DESIGN STUDIES CENTER
 April 2013



COLORADO

Isopluvials of 2-year 60-minute precipitation in inches

SCALE 1:2,250,000

0.36 - 0.40	0.81 - 0.90	1.31 - 1.40	1.81 - 1.90
0.41 - 0.50	0.91 - 1.00	1.41 - 1.50	1.91 - 1.99
0.51 - 0.60	1.01 - 1.10	1.51 - 1.60	
0.61 - 0.70	1.11 - 1.20	1.61 - 1.70	
0.71 - 0.80	1.21 - 1.30	1.71 - 1.80	

Projection: Lambert Conformal Conic; Datum NAD83; Standard Parallels: 38°N and 40°N; Central Meridian 105.5°W.

Legend based on entire Volume 8 project area.