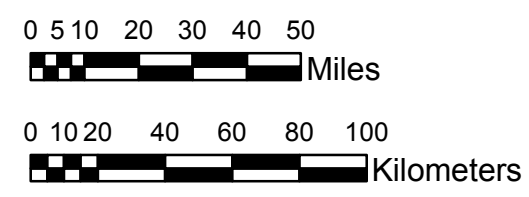


**NOAA Atlas 14, Volume 8, Version 2  
Midwestern States**



Prepared by U.S. DEPARTMENT OF COMMERCE  
NATIONAL OCEANIC AND ATMOSPHERIC ADMINISTRATION  
NATIONAL WEATHER SERVICE  
OFFICE OF HYDROLOGIC DEVELOPMENT  
HYDROMETEOROLOGICAL DESIGN STUDIES CENTER  
April 2013



**COLORADO**  
**Isopluvials of 2-year 60-day precipitation in inches**  
**SCALE 1:2,250,000**

Projection: Lambert Conformal Conic; Datum NAD83; Standard Parallels: 38°N and 40°N; Central Meridian 105.5°W.

3.13 - 4.00	8.01 - 9.00	13.01 - 14.00	18.01 - 19.00
4.01 - 5.00	9.01 - 10.00	14.01 - 15.00	19.01 - 20.08
5.01 - 6.00	10.01 - 11.00	15.01 - 16.00	
6.01 - 7.00	11.01 - 12.00	16.01 - 17.00	
7.01 - 8.00	12.01 - 13.00	17.01 - 18.00	

Legend based on entire Volume 8 project area.