

NOAA Atlas 14, Volume 8, Version 2
Midwestern States

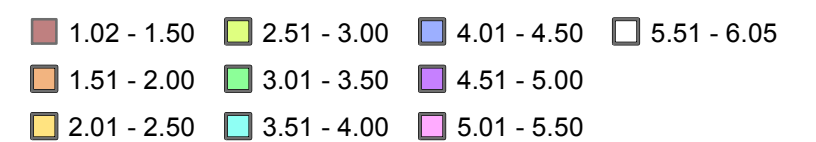
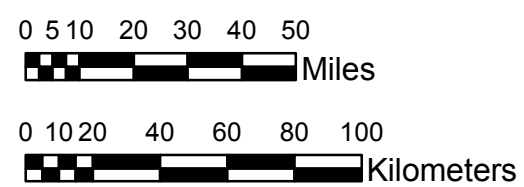
COLORADO

Isopluvials of 2-year 48-hour precipitation in inches

SCALE 1:2,250,000



Prepared by U.S. DEPARTMENT OF COMMERCE
 NATIONAL OCEANIC AND ATMOSPHERIC ADMINISTRATION
 NATIONAL WEATHER SERVICE
 OFFICE OF HYDROLOGIC DEVELOPMENT
 HYDROMETEOROLOGICAL DESIGN STUDIES CENTER
 April 2013



Projection: Lambert Conformal Conic; Datum NAD83; Standard Parallels: 38°N and 40°N; Central Meridian 105.5°W.

Legend based on entire Volume 8 project area.