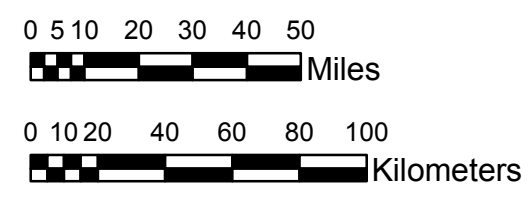


**NOAA Atlas 14, Volume 8, Version 2  
Midwestern States**



Prepared by U.S. DEPARTMENT OF COMMERCE  
NATIONAL OCEANIC AND ATMOSPHERIC ADMINISTRATION  
NATIONAL WEATHER SERVICE  
OFFICE OF HYDROLOGIC DEVELOPMENT  
HYDROMETEOROLOGICAL DESIGN STUDIES CENTER  
April 2013



**COLORADO**  
**Isopluvials of 2-year 30-day precipitation in inches**  
**SCALE 1:2,250,000**

|             |             |               |               |
|-------------|-------------|---------------|---------------|
| 2.22 - 3.00 | 5.01 - 6.00 | 8.01 - 9.00   | 11.01 - 12.00 |
| 3.01 - 4.00 | 6.01 - 7.00 | 9.01 - 10.00  | 12.01 - 13.00 |
| 4.01 - 5.00 | 7.01 - 8.00 | 10.01 - 11.00 | 13.01 - 13.72 |

Projection: Lambert Conformal Conic; Datum NAD83; Standard Parallels: 38°N and 40°N; Central Meridian 105.5°W.

Legend based on entire Volume 8 project area.