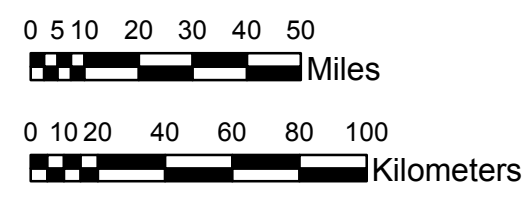


**NOAA Atlas 14, Volume 8, Version 2
Midwestern States**



Prepared by U.S. DEPARTMENT OF COMMERCE
NATIONAL OCEANIC AND ATMOSPHERIC ADMINISTRATION
NATIONAL WEATHER SERVICE
OFFICE OF HYDROLOGIC DEVELOPMENT
HYDROMETEOROLOGICAL DESIGN STUDIES CENTER
April 2013



COLORADO
Isopluvials of 2-year 24-hour precipitation in inches
SCALE 1:2,250,000

Projection: Lambert Conformal Conic; Datum NAD83; Standard Parallels: 38°N and 40°N; Central Meridian 105.5°W.

0.88 - 1.00	2.01 - 2.25	3.26 - 3.50	4.51 - 4.75
1.01 - 1.25	2.26 - 2.50	3.51 - 3.75	4.76 - 5.00
1.26 - 1.50	2.51 - 2.75	3.76 - 4.00	5.01 - 5.19
1.51 - 1.75	2.76 - 3.00	4.01 - 4.25	
1.76 - 2.00	3.01 - 3.25	4.26 - 4.50	

Legend based on entire Volume 8 project area.