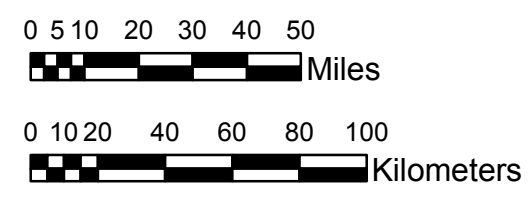


**NOAA Atlas 14, Volume 8, Version 2  
Midwestern States**



Prepared by U.S. DEPARTMENT OF COMMERCE  
NATIONAL OCEANIC AND ATMOSPHERIC ADMINISTRATION  
NATIONAL WEATHER SERVICE  
OFFICE OF HYDROLOGIC DEVELOPMENT  
HYDROMETEOROLOGICAL DESIGN STUDIES CENTER  
April 2013



**COLORADO**

**Isopluvials of 2-year 10-day precipitation in inches**

**SCALE 1:2,250,000**

1.50 - 2.00	3.51 - 4.00	5.51 - 6.00	7.51 - 8.00
2.01 - 2.50	4.01 - 4.50	6.01 - 6.50	8.01 - 8.52
2.51 - 3.00	4.51 - 5.00	6.51 - 7.00	
3.01 - 3.50	5.01 - 5.50	7.01 - 7.50	

Projection: Lambert Conformal Conic; Datum NAD83; Standard Parallels: 38°N and 40°N; Central Meridian 105.5°W.

Legend based on entire Volume 8 project area.