

**NOAA Atlas 14, Volume 8, Version 2
Midwestern States**

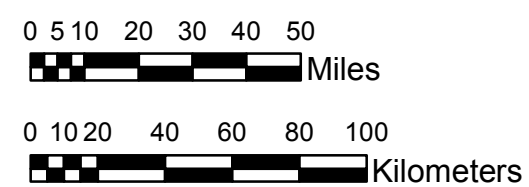
COLORADO

Isopluvials of 25-year 60-minute precipitation in inches

SCALE 1:2,250,000



Prepared by U.S. DEPARTMENT OF COMMERCE
NATIONAL OCEANIC AND ATMOSPHERIC ADMINISTRATION
NATIONAL WEATHER SERVICE
OFFICE OF HYDROLOGIC DEVELOPMENT
HYDROMETEOROLOGICAL DESIGN STUDIES CENTER
April 2013



0.74 - 0.75	1.26 - 1.50	2.01 - 2.25	2.76 - 3.00
0.76 - 1.00	1.51 - 1.75	2.26 - 2.50	3.01 - 3.25
1.01 - 1.25	1.76 - 2.00	2.51 - 2.75	3.26 - 3.33

Projection: Lambert Conformal Conic; Datum NAD83; Standard Parallels: 38°N and 40°N; Central Meridian 105.5°W.

Legend based on entire Volume 8 project area.