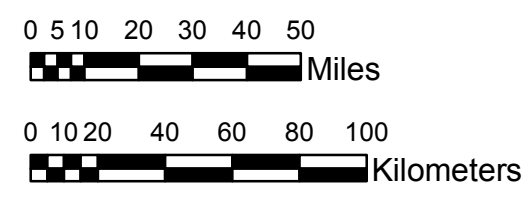


**NOAA Atlas 14, Volume 8, Version 2
Midwestern States**



Prepared by U.S. DEPARTMENT OF COMMERCE
NATIONAL OCEANIC AND ATMOSPHERIC ADMINISTRATION
NATIONAL WEATHER SERVICE
OFFICE OF HYDROLOGIC DEVELOPMENT
HYDROMETEOROLOGICAL DESIGN STUDIES CENTER
April 2013



COLORADO

Isopluvials of 25-year 24-hour precipitation in inches

SCALE 1:2,250,000

Projection: Lambert Conformal Conic; Datum NAD83; Standard Parallels: 38° N and 40° N; Central Meridian 105.5° W.

1.52 - 2.00	3.51 - 4.00	5.51 - 6.00	7.51 - 8.00
2.01 - 2.50	4.01 - 4.50	6.01 - 6.50	8.01 - 8.50
2.51 - 3.00	4.51 - 5.00	6.51 - 7.00	8.51 - 9.00
3.01 - 3.50	5.01 - 5.50	7.01 - 7.50	9.01 - 9.24

Legend based on entire Volume 8 project area.