

**NOAA Atlas 14, Volume 8, Version 2
Midwestern States**

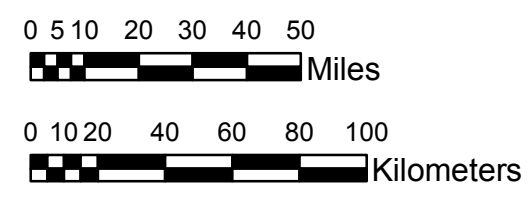
COLORADO

Isopluvials of 10-year 60-minute precipitation in inches

SCALE 1:2,250,000



Prepared by U.S. DEPARTMENT OF COMMERCE
NATIONAL OCEANIC AND ATMOSPHERIC ADMINISTRATION
NATIONAL WEATHER SERVICE
OFFICE OF HYDROLOGIC DEVELOPMENT
HYDROMETEOROLOGICAL DESIGN STUDIES CENTER
April 2013



Projection: Lambert Conformal Conic; Datum NAD83; Standard Parallels: 38° N and 40° N; Central Meridian 105.5° W.

Legend based on entire Volume 8 project area.