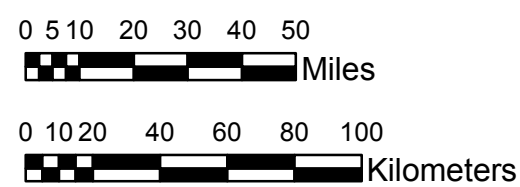


**NOAA Atlas 14, Volume 8, Version 2**  
**Midwestern States**



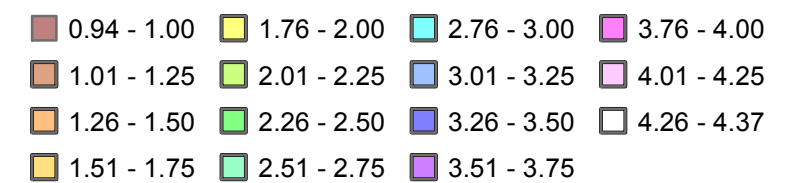
Prepared by U.S. DEPARTMENT OF COMMERCE  
 NATIONAL OCEANIC AND ATMOSPHERIC ADMINISTRATION  
 NATIONAL WEATHER SERVICE  
 OFFICE OF HYDROLOGIC DEVELOPMENT  
 HYDROMETEOROLOGICAL DESIGN STUDIES CENTER  
 April 2013



**COLORADO**

**Isopluvials of 100-year 60-minute precipitation in inches**

**SCALE 1:2,250,000**



*Legend based on entire Volume 8 project area.*

Projection: Lambert Conformal Conic; Datum NAD83; Standard Parallels: 38°N and 40°N; Central Meridian 105.5°W.