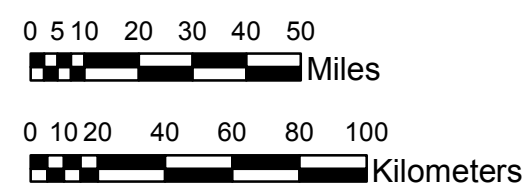


**NOAA Atlas 14, Volume 8, Version 2
Midwestern States**



Prepared by U.S. DEPARTMENT OF COMMERCE
NATIONAL OCEANIC AND ATMOSPHERIC ADMINISTRATION
NATIONAL WEATHER SERVICE
OFFICE OF HYDROLOGIC DEVELOPMENT
HYDROMETEOROLOGICAL DESIGN STUDIES CENTER
April 2013



COLORADO

Isopluvials of 100-year 60-day precipitation in inches

SCALE 1:2,250,000

Projection: Lambert Conformal Conic; Datum NAD83; Standard Parallels: 38°N and 40°N; Central Meridian 105.5°W.

5.64 - 6.00	12.01 - 14.00	20.01 - 22.00	28.01 - 30.00
6.01 - 8.00	14.01 - 16.00	22.01 - 24.00	30.01 - 32.00
8.01 - 10.00	16.01 - 18.00	24.01 - 26.00	32.01 - 33.77
10.01 - 12.00	18.01 - 20.00	26.01 - 28.00	

Legend based on entire Volume 8 project area.