

**NOAA Atlas 14, Volume 8, Version 2
Midwestern States**

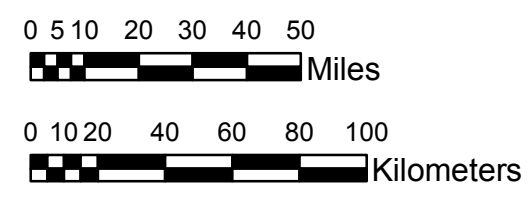
COLORADO

Isopluvials of 100-year 48-hour precipitation in inches

SCALE 1:2,250,000



Prepared by U.S. DEPARTMENT OF COMMERCE
NATIONAL OCEANIC AND ATMOSPHERIC ADMINISTRATION
NATIONAL WEATHER SERVICE
OFFICE OF HYDROLOGIC DEVELOPMENT
HYDROMETEOROLOGICAL DESIGN STUDIES CENTER
April 2013



| | | | |
|-------------|-------------|---------------|---------------|
| 2.14 - 3.00 | 5.01 - 6.00 | 8.01 - 9.00 | 11.01 - 12.00 |
| 3.01 - 4.00 | 6.01 - 7.00 | 9.01 - 10.00 | 12.01 - 13.00 |
| 4.01 - 5.00 | 7.01 - 8.00 | 10.01 - 11.00 | 13.01 - 13.83 |

Projection: Lambert Conformal Conic; Datum NAD83; Standard Parallels: 38° N and 40° N; Central Meridian 105.5° W.

Legend based on entire Volume 8 project area.