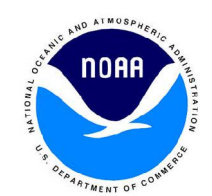
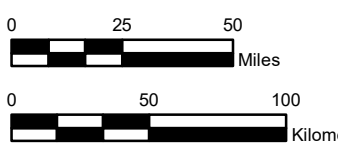


NOAA Atlas 14, Volume 12, Version 2
Interior Northwest



Prepared by U.S. DEPARTMENT OF COMMERCE
 NATIONAL OCEANIC AND ATMOSPHERIC ADMINISTRATION
 NATIONAL WEATHER SERVICE
 OFFICE OF WATER PREDICTION
 HYDROMETEOROLOGICAL DESIGN STUDIES CENTER
 August 2024



IDAHO, MONTANA, WYOMING

Isopluvials of 100-year 30-day precipitation in inches

SCALE 1:2,750,000

Projection: Lambert Conformal Conic; Datum NAD83; Standard Parallels: 43° N and 48° N; Central Meridian 110° W.



4.01 - 5.00	17.51 - 20.00	32.51 - 35.00
5.01 - 7.50	20.01 - 22.50	35.01 - 37.50
7.51 - 10.00	22.51 - 25.00	37.51 - 40.00
10.01 - 12.50	25.01 - 27.50	40.01 - 41.97
12.51 - 15.00	27.51 - 30.00	
15.01 - 17.50	30.01 - 32.50	