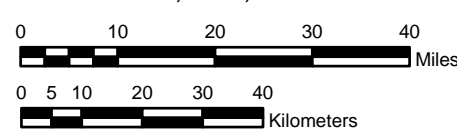


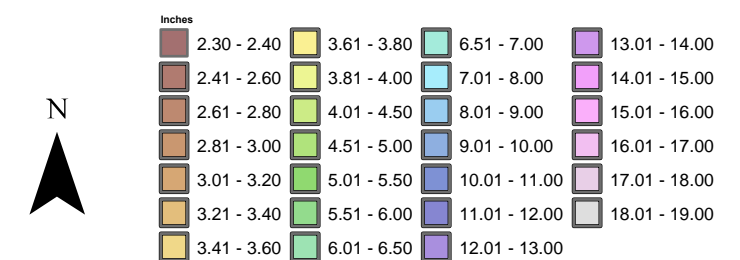
**NOAA Atlas 14, Volume 4, Version 3  
Hawaii**

Prepared by U.S. DEPARTMENT OF COMMERCE  
NATIONAL OCEANIC AND ATMOSPHERIC ADMINISTRATION  
NATIONAL WEATHER SERVICE  
OFFICE OF HYDROLOGIC DEVELOPMENT  
HYDROMETEOROLOGICAL DESIGN STUDIES CENTER  
March 2009

SCALE 1:1,250,000 (when printed/viewed at ANSI C size)



*HAWAII*  
**Isopluvials of 24 hour precipitation (inches)  
with average recurrence interval of 5 year**



Projection: Lambert Conformal Conic; Datum NAD83; Standard Parallels: 38' and 45'; Central Meridian 159'