

**NOAA Atlas 14, Volume 4, Version 3  
Hawaii**

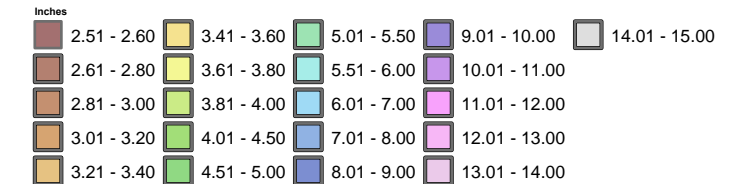
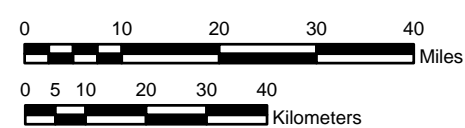
*HAWAII*

**Isopluvials of 6 hour precipitation (inches)  
with average recurrence interval of 50 years**



Prepared by U.S. DEPARTMENT OF COMMERCE  
NATIONAL OCEANIC AND ATMOSPHERIC ADMINISTRATION  
NATIONAL WEATHER SERVICE  
OFFICE OF HYDROLOGIC DEVELOPMENT  
HYDROMETEOROLOGICAL DESIGN STUDIES CENTER  
March 2009

SCALE 1:1,250,000 (when printed/viewed at ANSI C size)



Projection: Lambert Conformal Conic; Datum NAD83; Standard Parallels: 38° and 45°; Central Meridian 159°