

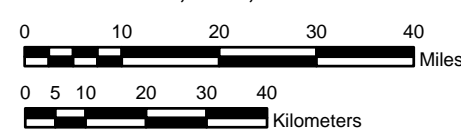
**NOAA Atlas 14, Volume 4, Version 3
Hawaii**

HAWAII



Prepared by U.S. DEPARTMENT OF COMMERCE
NATIONAL OCEANIC AND ATMOSPHERIC ADMINISTRATION
NATIONAL WEATHER SERVICE
OFFICE OF HYDROLOGIC DEVELOPMENT
HYDROMETEOROLOGICAL DESIGN STUDIES CENTER
March 2009

SCALE 1:1,250,000 (when printed/viewed at ANSI C size)



**Isopluvials of 60 minute precipitation (inches)
with average recurrence interval of 50 years**



Inches	
0.98 - 1.00	1.61 - 1.80
1.01 - 1.20	1.81 - 2.00
1.21 - 1.40	2.01 - 2.20
1.41 - 1.60	2.21 - 2.40
2.41 - 2.60	2.61 - 2.80
2.81 - 3.00	3.01 - 3.50
3.51 - 4.00	4.01 - 4.50
4.51 - 5.00	5.01 - 5.50
5.51 - 6.00	6.01 - 6.50
6.51 - 7.00	7.01 - 7.50

Projection: Lambert Conformal Conic; Datum NAD83; Standard Parallels: 38° and 45°; Central Meridian 159°