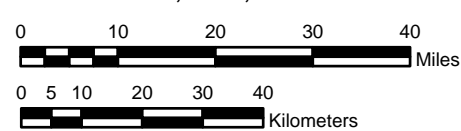


**NOAA Atlas 14, Volume 4, Version 3
Hawaii**

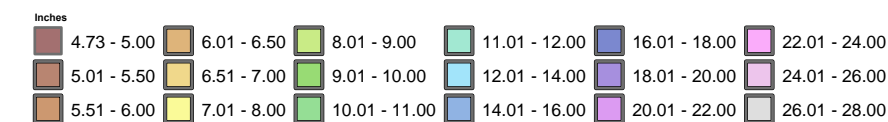


Prepared by U.S. DEPARTMENT OF COMMERCE
NATIONAL OCEANIC AND ATMOSPHERIC ADMINISTRATION
NATIONAL WEATHER SERVICE
OFFICE OF HYDROLOGIC DEVELOPMENT
HYDROMETEOROLOGICAL DESIGN STUDIES CENTER
March 2009

SCALE 1:1,250,000 (when printed/viewed at ANSI C size)



**Isopluvials of 24 hour precipitation (inches)
with average recurrence interval of 50 years**



Projection: Lambert Conformal Conic; Datum NAD83; Standard Parallels: 38° and 45°; Central Meridian 159°

HAWAII