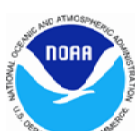


**NOAA Atlas 14, Volume 4, Version 3
Hawaii**

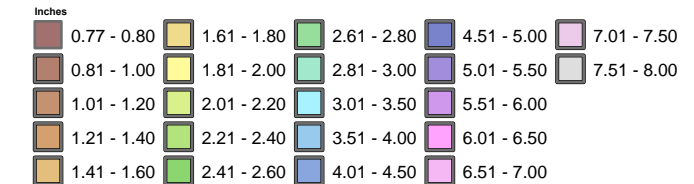
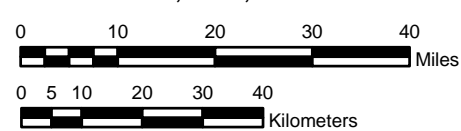
HAWAII

**Isopluvials of 6 hour precipitation (inches)
with average recurrence interval of 2 year**



Prepared by U.S. DEPARTMENT OF COMMERCE
NATIONAL OCEANIC AND ATMOSPHERIC ADMINISTRATION
NATIONAL WEATHER SERVICE
OFFICE OF HYDROLOGIC DEVELOPMENT
HYDROMETEOROLOGICAL DESIGN STUDIES CENTER
March 2009

SCALE 1:1,250,000 (when printed/viewed at ANSI C size)



Projection: Lambert Conformal Conic; Datum NAD83; Standard Parallels: 38' and 45'; Central Meridian 159'