

**NOAA Atlas 14, Volume 4, Version 3  
Hawaii**

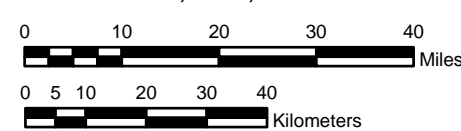
*HAWAII*

**Isopluvials of 48 hour precipitation (inches)  
with average recurrence interval of 2 year**



Prepared by U.S. DEPARTMENT OF COMMERCE  
NATIONAL OCEANIC AND ATMOSPHERIC ADMINISTRATION  
NATIONAL WEATHER SERVICE  
OFFICE OF HYDROLOGIC DEVELOPMENT  
HYDROMETEOROLOGICAL DESIGN STUDIES CENTER  
March 2009

SCALE 1:1,250,000 (when printed/viewed at ANSI C size)



1.63 - 1.80	2.61 - 2.80	4.51 - 5.00	7.01 - 7.50	11.01 - 12.00	16.01 - 17.00
1.81 - 2.00	2.81 - 3.00	5.01 - 5.50	7.51 - 8.00	12.01 - 13.00	17.01 - 18.00
2.01 - 2.20	3.01 - 3.50	5.51 - 6.00	8.01 - 9.00	13.01 - 14.00	18.01 - 19.00
2.21 - 2.40	3.51 - 4.00	6.01 - 6.50	9.01 - 10.00	14.01 - 15.00	19.01 - 20.00
2.41 - 2.60	4.01 - 4.50	6.51 - 7.00	10.01 - 11.00	15.01 - 16.00	20.01 - 21.00

Projection: Lambert Conformal Conic; Datum NAD83; Standard Parallels: 38° and 45°; Central Meridian 159°