

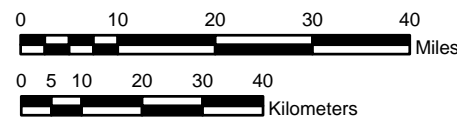
**NOAA Atlas 14, Volume 4, Version 3  
Hawaii**

*HAWAII*



Prepared by U.S. DEPARTMENT OF COMMERCE  
NATIONAL OCEANIC AND ATMOSPHERIC ADMINISTRATION  
NATIONAL WEATHER SERVICE  
OFFICE OF HYDROLOGIC DEVELOPMENT  
HYDROMETEOROLOGICAL DESIGN STUDIES CENTER  
March 2009

SCALE 1:1,250,000 (when printed/viewed at ANSI C size)



**Isopluvials of 60 day precipitation (inches)  
with average recurrence interval of 100 years**



12.92 - 14.00	26.01 - 28.00	40.01 - 45.00	90.01 - 100.00
14.01 - 16.00	28.01 - 30.00	45.01 - 50.00	100.01 - 120.00
16.01 - 18.00	30.01 - 32.00	50.01 - 55.00	120.01 - 140.00
18.01 - 20.00	32.01 - 34.00	55.01 - 60.00	140.01 - 160.00
20.01 - 22.00	34.01 - 36.00	60.01 - 70.00	160.01 - 180.00
22.01 - 24.00	36.01 - 38.00	70.01 - 80.00	180.01 - 200.00
24.01 - 26.00	38.01 - 40.00	80.01 - 90.00	200.01 - 220.00

Projection: Lambert Conformal Conic; Datum NAD83; Standard Parallels: 38' and 45'; Central Meridian 159'