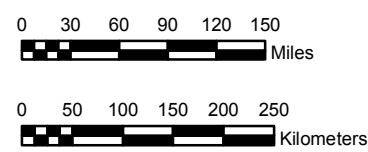


**NOAA Atlas 14, Volume 7, Version 2
Alaska**



Prepared by U.S. DEPARTMENT OF COMMERCE
NATIONAL OCEANIC AND ATMOSPHERIC ADMINISTRATION
NATIONAL WEATHER SERVICE
OFFICE OF HYDROLOGIC DEVELOPMENT
HYDROMETEOROLOGICAL DESIGN STUDIES CENTER
January 2012



ALASKA

Isopluvials of 50-year 60-minute precipitation in inches

SCALE 1:7,500,000

Projection: Alaska Albers Equal Area Conic; Datum NAD83; Standard Parallels: 65°N and 55°N; Central Meridian 154°W.

